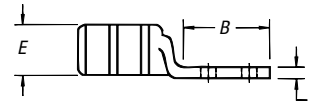
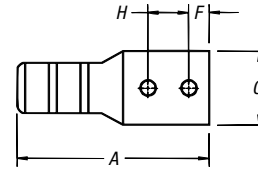


Compression Connectors for Copper Conductor

Two-Hole Lugs — Long Barrel 600V to 35kV



Peep Holes Available!
Add suffix **-PH**



Material: High-Conductivity
Wrought Copper
Finish: Electro Tin Plate

CAT. NO.	WIRE SIZE				DIMENSIONS (IN.)							DIE CODE	DIE COLOR	
	CODE	FLEX CLASS G, H, I, K, M ¹	BOLT SIZE	A	B	C	D	E	F	H				
54801BE			¼	1.86	1.19	.50	.05	.20	¼	⅝			ERG4002, ERG4005	"C" NEST
256-31426-3			#10	2.00	1.25	.37	.07	.20	¼	⅝				
256-31426-3SPH	#14-10 AWG		#10	2.00	1.25	.37	.07	.20	⅜	⅝-¾				
256-30695-1298			¼	1.89	1.22	.50	.05	.20	¼	⅝				
256-30695-1730			¼	1.98	1.31	.50	.05	.20	¼	⅝-¾				
54850BE*		37/24 = 14.9 kcmil	¼	2.19	1.89	.42	.07	.26	¼	⅝	21		RED	
54851BE*	#8 AWG	#8 Weld	¼	2.31	1.29	.47	.06	.26	¼	¾	21		RED	
256-30695-1157		23 Navy	⅜	3.00	2.10	.56	.06	.26	⅝	1	21		RED	
54852BE*		30 Navy	¼	2.28	1.28	.44	.08	.30	¼	⅝	24		BLUE	
256-30695-1014		61/24 = 24.6 kcmil	¼	2.63	1.63	.43	.08	.30	¼	1	24			
256-30695-1225*	#6 AWG	#6 Weld	¼	2.43	1.43	.43	.08	.30	¼	¾	24			
256-30695-1158*		#5 Weld	⅜	2.93	1.93	.59	.06	.30	⅝	1	24			
256-30695-868*			½	4.18	3.00	.88	.11	.30	½	1¾	24		BLUE	
54854BE*			¼	2.31	1.19	.52	.10	.37	¼	⅝	29		GRAY	
256-30695-1246*			¼	2.31	1.31	.56	.09	.37	¼	¾	29			
256-30695-1015	#4 AWG	40-50 Navy	¼	2.88	1.88	.58	.09	.37	⅝	1	29			
256-30695-1337		#5, 91/24 = 36.7 kcmil	⅜	2.75	1.75	.56	.10	.37	1½/2	1	29			
256-30695-1159*		#4 Weld	⅜	3.13	1.98	.59	.09	.37	⅝	1	29		GRAY	
256-30695-733*			½	4.18	3.00	.88	.09	.37	½	1¾	29		GRAY	
256-30695-1016			¼	3.06	1.88	.67	.09	.41	⅝	1	33		BROWN	
54855BE*			¼	2.43	1.28	.59	.11	.41	¼	⅝	33			
256-30695-1300*		60 Navy	¼	2.63	1.35	.68	.11	.41	¼	¾	33			
54856BE*	#2-3 AWG	#3 Weld	⅜	2.78	1.63	.59	.11	.41	⅝	¾	33			
54810BE		125/24 = 50.4 kcmil	⅜	3.80	2.57	.59	.11	.41	⅝	1¾	33		BROWN	
256-30695-1160*			⅜	3.08	1.94	.59	.11	.41	⅝	1	33		BROWN	
256-30695-869			½	4.02	2.88	.75	.09	.41	⅝	1¾	33		BROWN	
54811BE*			½	4.28	3.00	.88	.11	.41	½	1¾	33		BROWN	
54809BE			¼	2.88	1.19	.67	.11	.47	¼	⅝	37		GREEN	
54812BE		75 Navy	¼	2.75	1.40	.67	.11	.47	¼	¾	37			
54858BE	#1 AWG	150/24 = 60.5 kcmil	⅜	2.97	1.63	.67	.11	.47	⅝	⅞	37			
256-30695-1161		175/24 = 70.6 kcmil,	⅜	3.30	1.98	.67	.11	.47	⅝	1	37			
54857BE		#2 Weld	½	4.43	3.00	.88	.11	.47	½	1¾	37		GREEN	
256-30695-1018			¼	3.63	1.88	.75	.13	.52	⅝	1	42		PINK	
256-30695-1018P			¼	3.63	1.88	.75	.13	.52	⅝	1	42			
54859BE			¼	2.63	1.19	.75	.13	.52	¼	⅝	42			
54813BE	#1 AWG	100 Navy	¼	2.71	1.38	.75	.13	.52	¼	¾	42			
54860BE		#1 Weld	¼	2.71	1.38	.75	.13	.52	¼	¾	42			
256-30695-1162P		225/24 = 90.8 kcmil	⅜	3.25	1.98	.75	.13	.52	⅝	1	42			
256-30695-1162			⅜	3.23	1.93	.75	.13	.52	⅝	1	42			
256-30695-593*			½	4.33	3.00	.75	.13	.52	⅝	1¾	42			

¹ Contact Technical Services for specific stranding listings

* UL® Listed for direct-burial applications

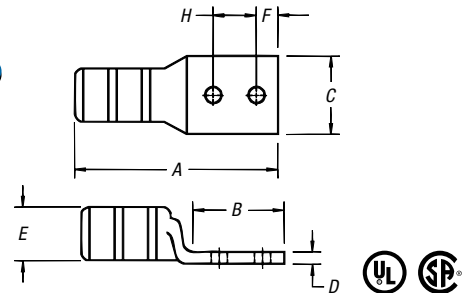
Tooling: pp. F-80-F-100 Die Selector Chart: pp. F-101-F-104

Compression Connectors for Copper Conductor

Two-Hole Lugs — Long Barrel 600V to 35KV (continued)



Peep Holes Available!
Add suffix **-PH**



Material: High-Conductivity
Wrought Copper
Finish: Electro Tin Plate

CAT. NO.	WIRE SIZE			DIMENSIONS (IN.)								DIE CODE	DIE COLOR
	CODE	FLEX CLASS G, H, I, K, M [†]	BOLT SIZE	A	B	C	D	E	F	H			
54814BE			¼	2.62	1.25	.83	.13	.57	¼	¾	45	BLACK	
256-30695-1299		125 Navy	¼	2.69	1.31	.81	.13	.57	¼	¾	45		
256-30695-1116	2/0 AWG	275/24 = 111 kcmil	¾	3.19	1.81	.83	.13	.57	¾	1	45		
256-30695-1116P		1/0 Weld	¾	3.19	1.81	.83	.13	.57	¾	1	45		
54862BE*			½	4.20	2.81	.83	.13	.57	½	1¼	45	ORANGE	
54815BE		2/0 Weld	¼	2.89	1.45	.92	.13	.63	¼	¾	50		
54816BE	3/0 AWG	325/24 = 131 kcmil	¾	3.25	1.63	.92	.13	.63	¾	1	50		
54864BE		150 Navy	½	4.48	3.00	.94	.13	.63	½	1¼	50		
54817BE			¼	3.15	1.38	1.03	.14	.70	¼	¾	54	PURPLE	
54818BE		200 Navy	¾	4.38	2.63	1.03	.14	.70	¾	1¼	54		
256-30695-1117	4/0 AWG	450/24 = 182 kcmil	¾	3.35	1.81	1.03	.14	.70	¾	1	54		
256-30695-1117P		3/0 Weld	¾	3.50	1.88	1.03	.14	.70	¾	1	54		
54866BE*			½	4.70	3.00	1.03	.14	.70	½	1¼	54	YELLOW	
256-30695-1245		250 Navy	¾	3.83	1.93	1.13	.14	.77	¾	1	62		
256-30695-1245P	250 kcmil	550/24 = 222 kcmil,	¾	3.83	1.93	1.13	.14	.77	¾	1	62		
54868BE*		4/0 Weld	½	4.92	3.00	1.13	.14	.77	½	1¼	62		
54819BE		300 Navy	¾	5.04	2.80	1.25	.15	.85	¾	1	66	WHITE	
54870BE	300 kcmil	250 Weld, 262, 650/24	½	5.23	3.00	1.25	.15	.85	½	1¼	66		
54820BE			¼	4.29	1.93	1.36	.18	.93	¼	¾	71	RED	
256-30695-1118		350 Navy	¾	4.33	1.93	1.36	.18	.93	¾	1	71		
256-30695-1118P	350 kcmil		¾	4.33	1.93	1.36	.18	.93	¾	1	71		
54872BE			½	5.40	3.00	1.36	.18	.93	½	1¼	71		
54822BE		400 Navy	¼	4.38	1.93	1.41	.17	.96	¼	¾	76	BLUE	
54821BE	400 kcmil	775/24 = 313 kcmil	¾	4.43	1.93	1.41	.17	.96	¾	1	76		
54874BE		300 Flex, 350, 259 Str.	½	5.51	3.00	1.41	.17	.96	½	1¼	76		
54823BE			¼	4.93	1.94	1.61	.22	1.10	¼	¾	87		
256-30695-1119		400 Weld, G, H, I	¾	5.00	1.93	1.61	.22	1.10	¾	1	87	BROWN	
256-30695-1119P	500 kcmil	925/24 = 373 kcmil	¾	5.00	1.93	1.61	.22	1.10	¾	1	87		
54876BE		350, K	¾	5.00	1.93	1.61	.22	1.10	¾	1	87		
54824BE		450, I, K	¾	5.70	2.80	1.75	.24	1.20	¾	1	94		
54878BE	600 kcmil	1100/24 = 444 kcmil	½	5.83	3.00	1.75	.24	1.20	½	1¼	94	GREEN	
54879BE	700 kcmil	1325/24 = 535 kcmil	½	5.83	3.00	1.80	.24	1.25	½	1¼	99	PINK	
256-30695-1222			¾	5.25	2.06	1.94	.27	1.33	½	1	106	BLACK	
256-30695-1222P	750 kcmil	500, G, H, I, K	¾	5.25	2.06	1.94	.27	1.33	½	1	106		
54880BE		1325/24 = 535 kcmil	½	6.20	3.00	1.94	.27	1.33	½	1¼	106		
58884BE		1600/24 = 646 kcmil	½	6.16	3.00	1.94	.27	1.33	½	1¼	106		
58826BE	900 kcmil	1925/24 = 777 kcmil	½	6.74	3.00	2.18	.31	1.50	½	1¼	115	YELLOW	
54826BE			¾	6.49	2.80	2.27	.30	1.55	¾	1	125	N/A	
54882BE	1000 kcmil	1000 Navy	½	6.66	3.00	2.27	.30	1.55	¾	1¼	125		
54888BE	1250 kcmil	929, 2300/24	½	7.88	3.00	2.42	.35	1.67	¾	1¼	140		

[†] Contact Technical Services for specific stranding listings

* UL® Listed for direct-burial applications

Tooling: pp. F-80-F-100 Die Selector Chart: pp. F-101-F-104

www.tnb.com

United States
Tel: 901.252.8000
800.816.7809
Fax: 901.252.1354

Technical Services
Tel: 888.862.3289

Thomas & Betts

Connectors & Grounding — Blackburn® Compression Connectors Featuring the Color-Keyed® System